

DESIGNED & DIMENSIONED
IN MILLIMETERS [INCHES]

SMB7H-J-P-XX-RA-TH1

GENDER
-J: JACK

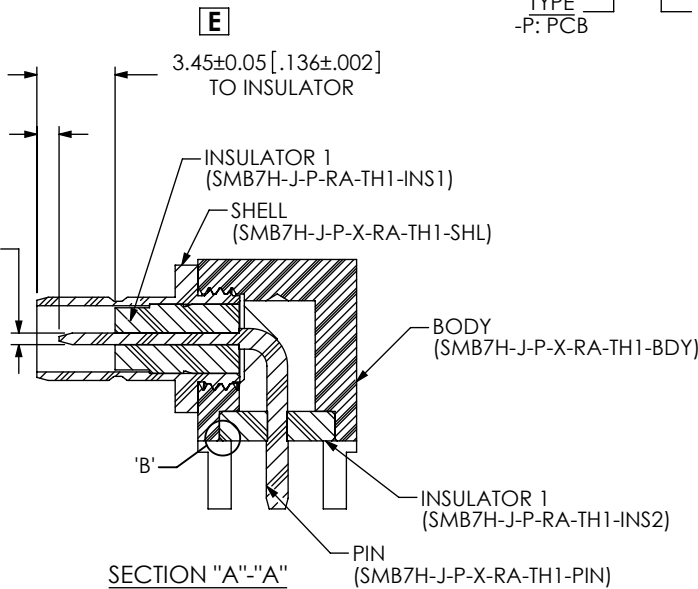
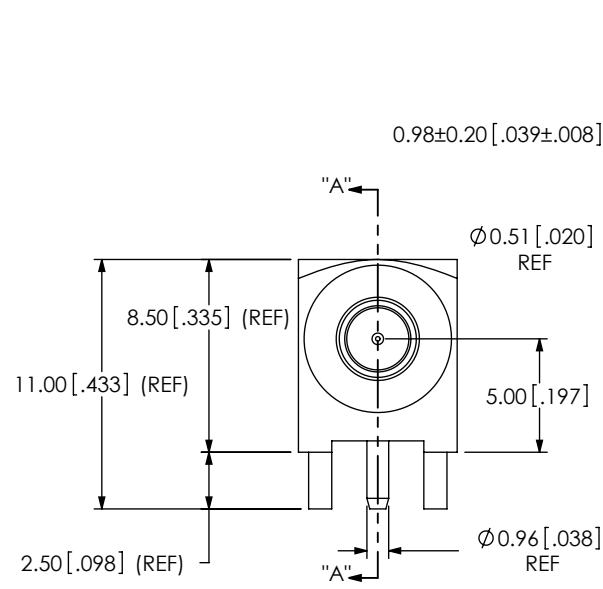
TERMINATION
-TH1: THROUGH HOLE

ORIENTATION
-RA: RIGHT ANGLE

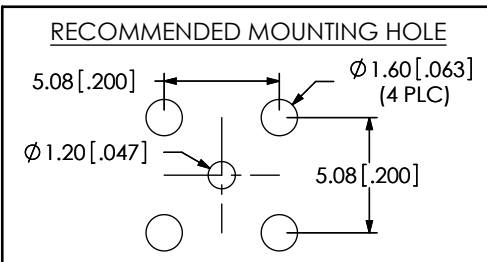
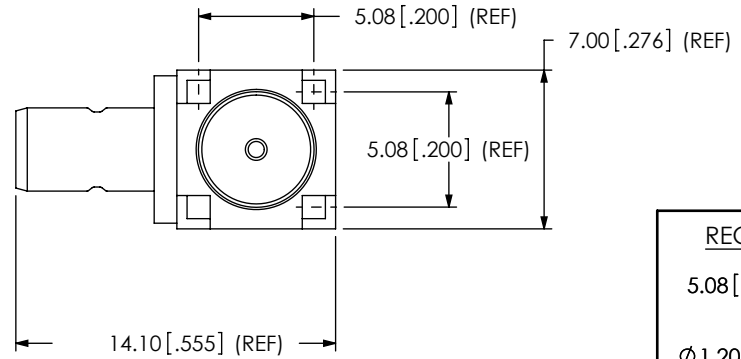
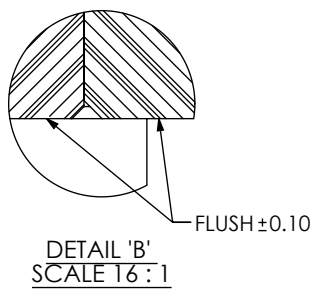
TYPE
-P: PCB

PLATING
-HN: HEAVY GOLD/NICKEL (SEE NOTE 6 & 7)
(SMB7H-J-P-H-RA-TH1-PIN)
(SMB7H-J-P-F-RA-TH1-SHL)
(SMB7H-J-P-N-RA-TH1-BDY)

-H: HEAVY GOLD (SEE NOTE 6 & 7)
(SMB7H-J-P-H-RA-TH1-PIN)
(SMB7H-J-P-F-RA-TH1-SHL)
(SMB7H-J-P-F-RA-TH1-BDY)




SMB7H-J-P-H-RA-TH1
(SHOWN)



NOTES:

1. REPRESENTS A CRITICAL DIMENSION.
2. PUSHOUT FORCE FOR INSULATOR: 35.58 N [8.0 LB] MIN.
3. PUSHOUT FORCE FOR CENTER CONTACT: 17.79 N [4.0 LB] MIN.
4. PRODUCT TO BE PACKAGED PER PACKAGING STANDARD CO-HD-WI-3040-M.
5. RoHS COMPLIANT.
6. COMPONENT PLATING DESIGNATIONS:
-H: 0.00076[0.000030] (MIN) GOLD OVER 0.00127[0.000050] (MIN) NICKEL.
-F: 0.00008[0.000003] (MIN) GOLD OVER 0.00127[0.000050] (MIN) NICKEL.
-N: 0.00254[0.000100] (MIN) NICKEL.
7. ASSEMBLY PLATING DESIGNATIONS:
-HN: (CENTER CONTACT)-H:
(OUTER CONTACT)-F:
(REMAINING METAL PARTS)-N:
-H: (CENTER CONTACT)-H:
(OUTER CONTACT)-F:
(REMAINING METAL PARTS)-F:

F:\DWG\MISC\MKTG\SMB7H-J-P-XX-RA-TH1-MKT.SLDRW

| | | |
|--|---|---|
| <p>UNLESS OTHERWISE SPECIFIED, DIMENSIONS ARE IN MILLIMETERS. TOLERANCES ARE:</p> <p>DECIMALS ANGLES</p> <p>.X: ±0.3 [.01] 2°</p> <p>.XX: ±0.13 [.005]</p> <p>.XXX: ±0.051 [.0020]</p> | <p>PROPRIETARY NOTE</p> <p>THIS DOCUMENT CONTAINS INFORMATION CONFIDENTIAL AND PROPRIETARY TO SAMTEC, INC. AND SHALL NOT BE REPRODUCED OR TRANSFERRED TO OTHER DOCUMENTS OR DISCLOSED TO OTHERS OR USED FOR ANY PURPOSE OTHER THAN THAT WHICH IT WAS OBTAINED WITHOUT THE EXPRESSED WRITTEN CONSENT OF SAMTEC, INC.</p> |  <p>520 PARK EAST BLVD, NEW ALBANY, IN 47150 PHONE: 812-944-6733 FAX: 812-948-5047 e-Mail: info@SAMTEC.com code: 55322</p> |
| <p>DO NOT SCALE DRAWING SHEET SCALE: 3:1</p> | | <p>DESCRIPTION: SMB7 RIGHT ANGLE JACK- 75 OHM</p> |
| <p>MATERIAL: CONTACT, SHELL, BODY: BRASS DIELECTRIC: PTFE</p> | | <p>DWG. NO. SMB7H-J-P-XX-RA-TH1</p> |
| <p>BY: G. HERMAN 03/25/2008</p> | | <p>SHEET 1 OF 1</p> |