



# PCN - 12 117-R.1

Issue Date: February 25 2013

<b>Product Name:</b>	1.27 MM BTB			
	Unshrouded BTB header, Shrouded BTB header, BTB Receptacle			
<b>Product Manager:</b>	Feagle Pan			
<b>Subject:</b>	Notification of Planned Change			
<b>Distribution:</b>	Global			
<b>Type of Change:</b>	Design Change			
<b>Change Description:</b>	<p>1) Design change</p> <ul style="list-style-type: none"> <li>- Receptacle: terminal design change; housing and terminal material change; plating change and packaging/MOQ change.</li> <li>- Header: housing material change; plating change and packaging/MOQ change.</li> <li>- But there is NO part number change.</li> <li>- After the change, the product performance will exceed current product specification.</li> <li>- <b>Refer to attached "PCN12117 CHANGE DESCRIPTION" file with detailed info.</b></li> </ul> <p>2) Location change, change from FCI Taiwan site to FCI China site.</p>			
<b>Reason for Change:</b>	<p>Improve product feature and logistics. And, strengthen FCI Basics+ product in the market.</p> <p><b>By Rev.1 - There will not be any PN change as described to the first release. Further detailed description of change has been included in the embedded presentation.</b></p>			
<b>Affected Parts:</b>	See attached list.			
<b>Effective Date of Change:</b>	April	01	2013	
<b>Last Time Buy Date:</b>	March	28	2013	
<b>Last Disty Return Date:</b>	N/A	N/A	N/A	
<b>Datasheet Attached?</b>	No			
<b>Qual/Test Data Attached?</b>	No <i>Qualification report will be available on Feb 28, 2013.</i>			
<b>Samples Availability Date:</b>	February	25	2013	
<b>Available Alternatives?</b>	N/A			
<b>Questions?</b>	Contact your local FCI Representative, or			
	Feagle Pan / Product manager			
	Phone number: +86 513 80167369 / e-mail address: feagle.pan@fci.com			



# MINITEK 1.27MM Change description

---Between new and original 1.27MM MINITEK

**NO PART NUMBER CHANGE**

# 1. Receptacle change – terminal design

## Original:

- For Terminal of receptacle (20021311 and 20021321series parts): design the barbs at U form feature area;

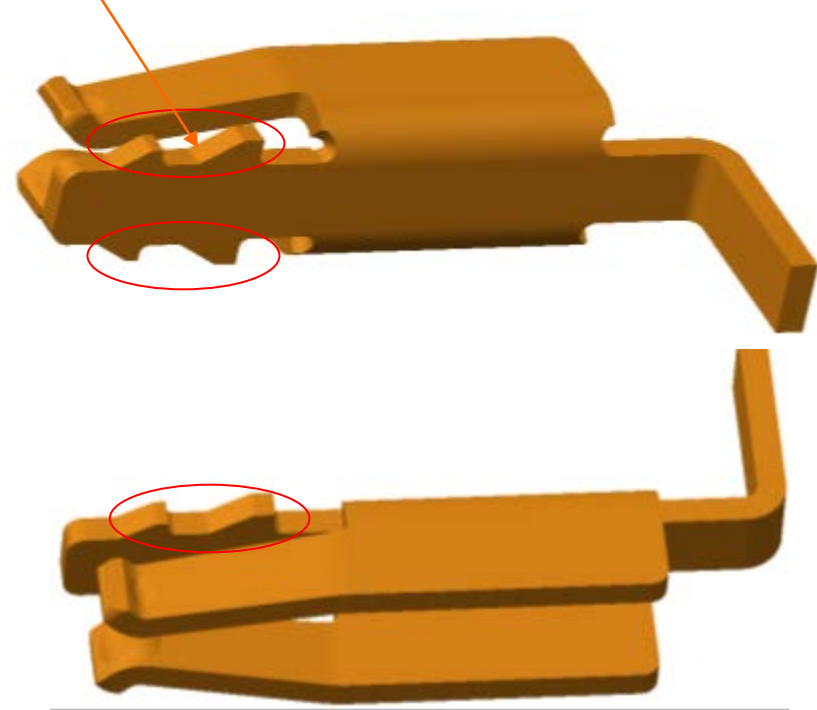
Design the barbs at U form feature area



## New:

- For Terminal of receptacle (20021311 and 20021321series parts): design the barbs at tongue feature area for better retention force;

Design the barbs at tongue feature area



# 1. Receptacle change – others



Proven Connections  
Innovative Solutions

- For all receptacle 20021311 and 20021321 series parts: Change the housing material, plating spec, package spec and MOQ as below showing.
- Developed new mold, die and assembly machine due to design change.
- Have available 15u” GXT plating option



Microsoft Office  
Excel 97-2003 Worksheet

Item	Original	New
Housing material	LCP E471i (Halogen free)	LCP E130i (Halogen free)
Terminal	Phosphor bronze C5191-H	Phosphor bronze C5210-H
Plating specification	Plating option 1, PN 200213XX-000XXX1LF Gold flash over all	1. Gold flash on contact area, 100u” pure tin on solder tail.
	Plating option 4, PN 200213XX-000XXX4LF 10u” Au on contact area, gold flash on solder tail.	4. 10u” Au on contact area, 100u” pure tin on solder tail.
	Plating option 8, PN 200213XX-000XXX8LF 30u” Au on contact area, gold flash on solder tail.	8. 30u” GXT on contact area, 100u” pure tin on solder tail.
Packing size (carton size)	For tube style: 130*86*315MM	For tube style:104*67*625MM
	For reel style: 350*350*75/290MM	For reel style: 350*350*85MM
MOQ	For the detail change of MOQ, please refer to enclosed excel file.	

## 2. Header change

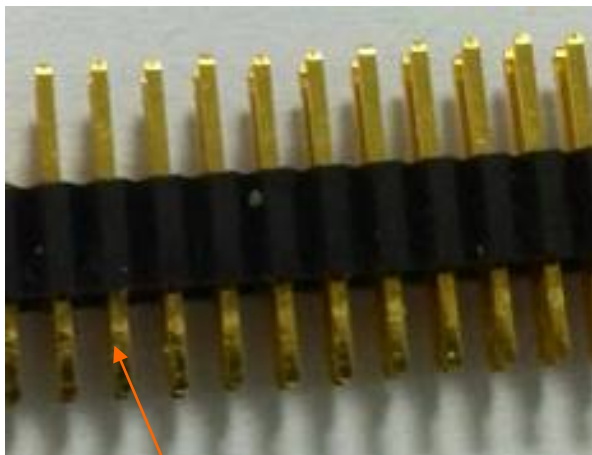
- For all header 20021111, 20021112, 20021121, 20021211, 20021212 and 20021221 series parts: Change the housing material, plating spec, package spec and MOQ as below showing.
- Developed new mold, die and assembly machine due to design change.
- Have available 15u" GXT plating option

Item	Original	New
Housing material	NY6T (not Halogen free)	HTN (Halogen free)
Plating specification	Plating option 1, PN20021XXX-000XXX1LF Gold flash over all	1. Gold flash on contact area, 100u" pure tin on solder tail.
	Plating option 4, PN20021XXX-000XXX4LF 10u" Au on contact area, gold flash on solder tail.	4. 10u" Au on contact area, 100u" pure tin on solder tail.
	Plating option 8, PN20021XXX-000XXX8LF 30u" Au on contact area, gold flash on solder tail.	8. 30u" GXT on contact area, 100u" pure tin on solder tail.
Packing size (carton size)	For tube style: 130*86*315MM	For tube style: 104*67*625MM
	For reel style: 350*350*75/290MM	For reel style: 350*350*85MM
MOQ	For the detail change of MOQ, please refer to enclosed excel file.	

### 3. Appearance difference - Unshrouded Header VT TH(20021111 series)

#### Original:

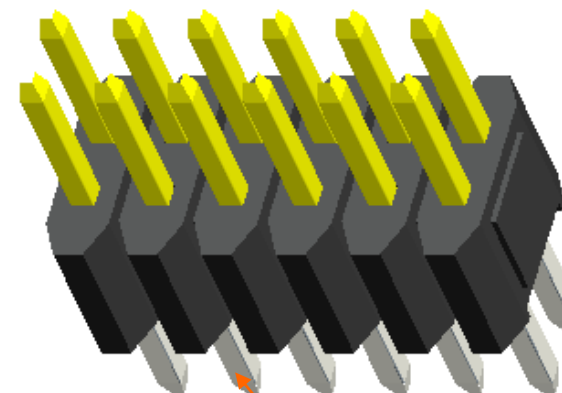
- Au plating all over the Pin (Yellow color);



Yellow color at solder tail area

#### New:

- Au / GXT plating at contact area;  
Tin plating at Tail area (White color);

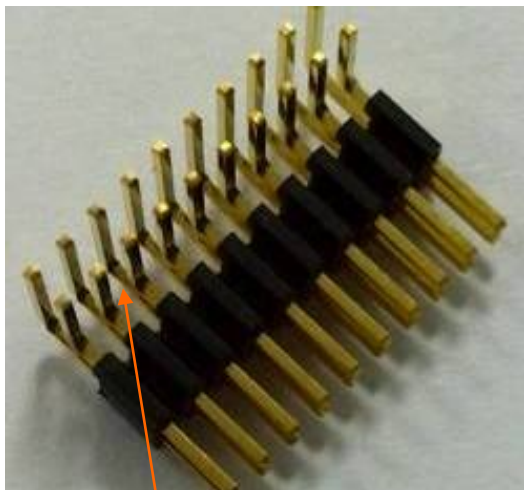


White color at solder tail area

### 3. Appearance difference - Unshrouded Header RA TH(20021112 series)

#### Original:

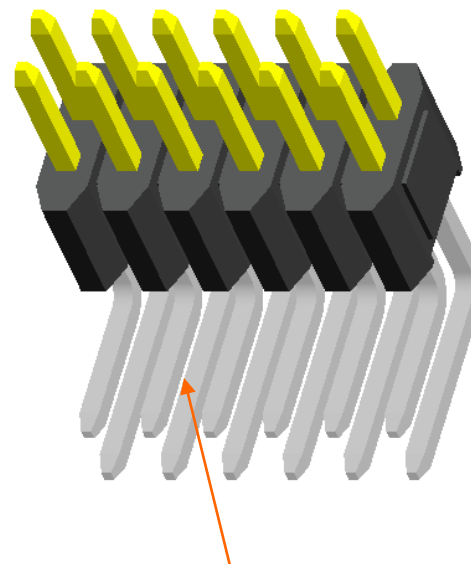
- Au plating all over the Pin (Yellow color);



Yellow color at solder tail area

#### New:

- Au / GXT plating at contact area;  
Tin plating at Tail area (White color);

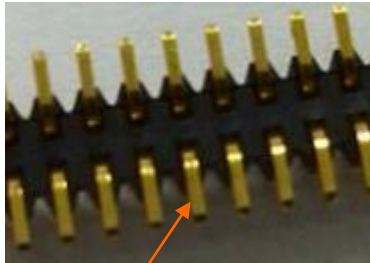


White color at solder tail area

### 3. Appearance difference - Unshrouded Header VT SMT(20021121 series)

#### Original:

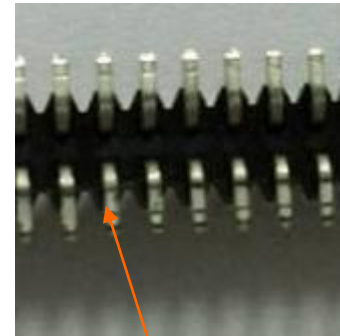
- Au plating all over the Pin (Yellow color);



Yellow color at solder tail area

#### New:

- Au / GXT plating at contact area;  
Tin plating at Tail area (White color);



White color at solder tail area

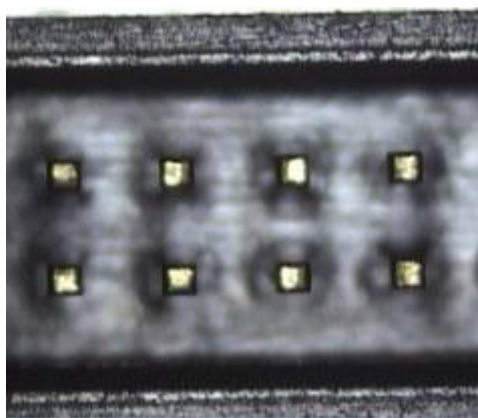


### 3. Appearance difference - Shrouded Header VT TH (20021211 series)

#### Original:

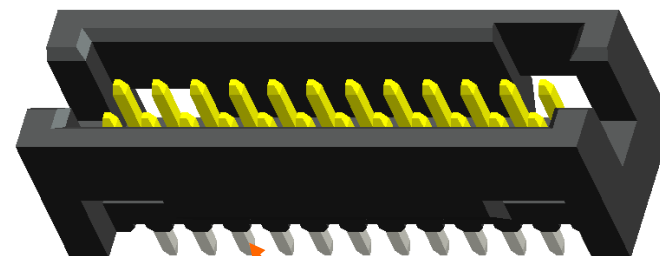
- Au plating all over the Pin (Yellow color);
- For housing: there is no blind hole in the middle area;

Yellow color at solder tail area

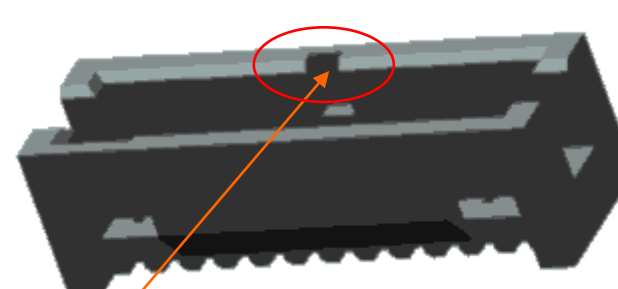


#### New:

- Au / GXT plating at contact area; Tin plating at Tail area (White color);
- For housing: having blind hole in the middle area for cap location;



White color at solder tail area



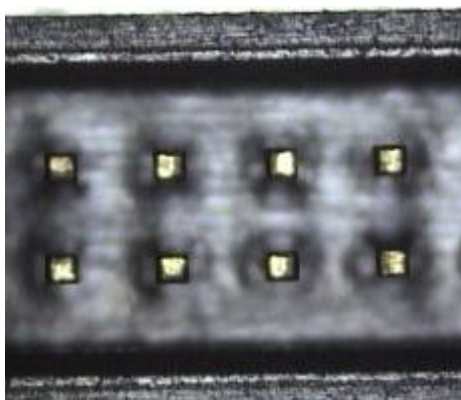
Blind hole in the middle of housing for cap location ( only 1 side)

### 3. Appearance difference - Shrouded Header RA TH (20021212 series)

#### Original:

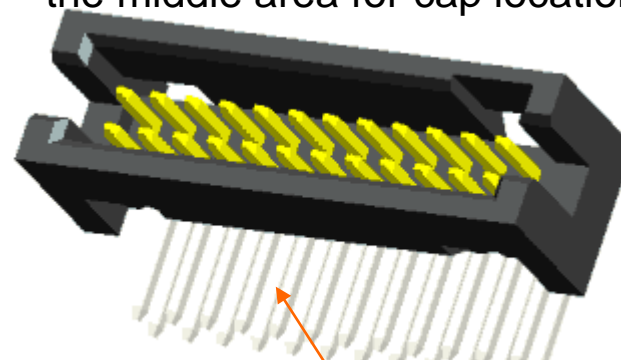
- Au plating all over the Pin (Yellow color);
- For housing: there is no blind hole in the middle area;

Yellow color at solder tail area

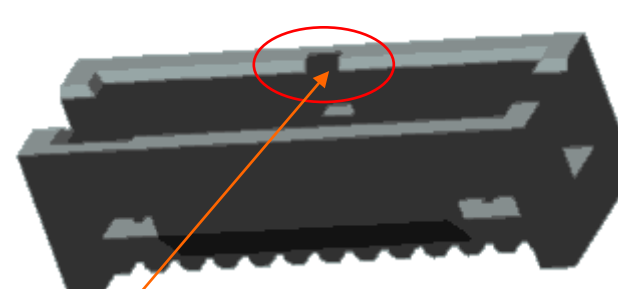


#### New:

- Au / GXT plating at contact area;  
Tin plating at Tail area (White color);
- For housing: having blind hole in the middle area for cap location;



White color at solder tail area



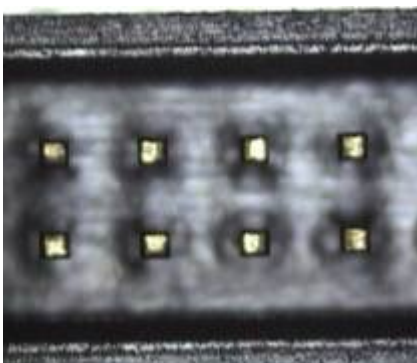
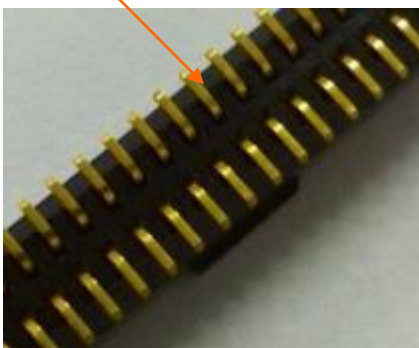
Blind hole in the middle of housing for cap location ( only 1 side)

### 3. Appearance difference - Shrouded Header VT SMT (20021221 series)

#### Original:

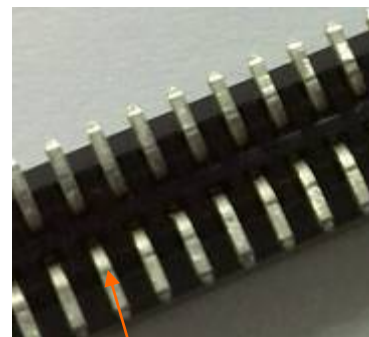
- Au plating all over the Pin (Yellow color);
- For housing: there is no blind hole in the middle area;

Yellow color at solder tail area

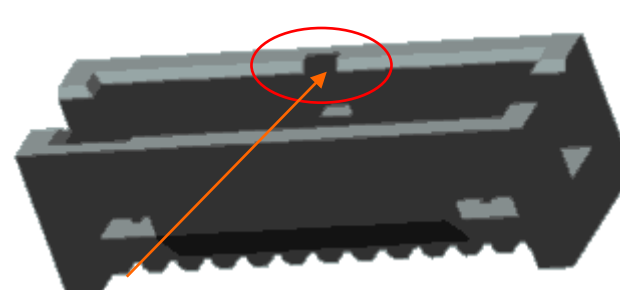


#### New:

- Au / GXT plating at contact area; Tin plating at Tail area (White color);
- For housing: having blind hole in the middle area for cap location;



White color at solder tail area



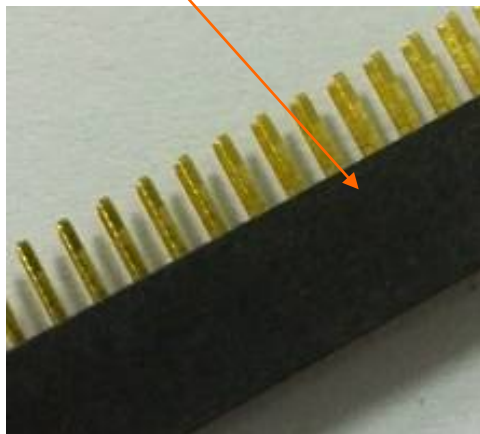
Blind hole in the middle of housing for cap location ( only 1 side)

### 3. Appearance difference - Receptacle VT TH (20021311 series)

#### Original:

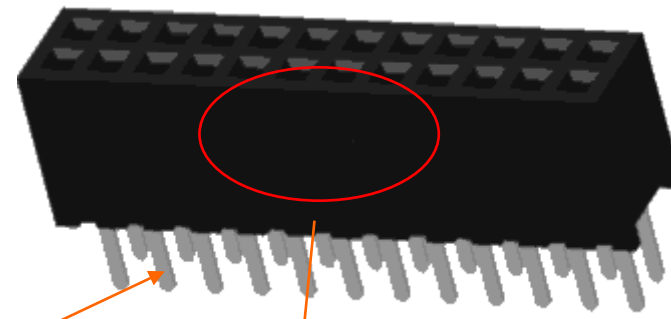
- Au plating all over the Pin (Yellow color);
- For housing: there is no flat groove in the middle area and no nick in the bottom of housing;

Yellow color at solder tail area

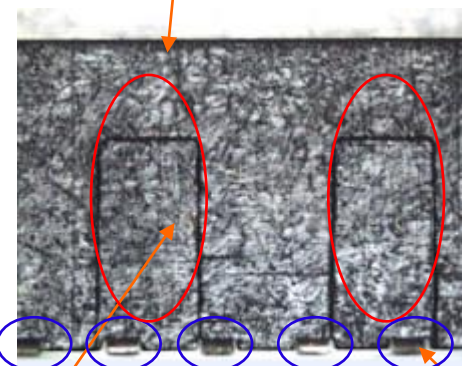


#### New:

- Au / GXT plating at contact area; Tin plating at Tail area (White color);
- For housing: having flat groove in the middle area for cap location (2 sides); and having nick feature in the bottom of housing for tail location (2 sides);



White color at solder tail area



Flat groove in the middle area for cap location

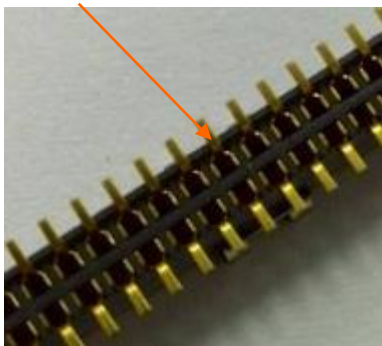
Nick feature in the bottom of housing for tail location

### 3. Appearance difference - Receptacle VT SMT (20021321 series)

#### Original:

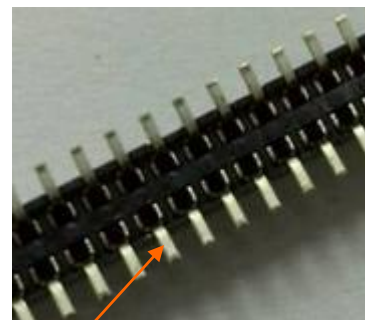
- Au plating all over the Pin (Yellow color);
- For housing: there is no flat groove in the middle area and no nick in the bottom of housing;

Yellow color at solder tail area

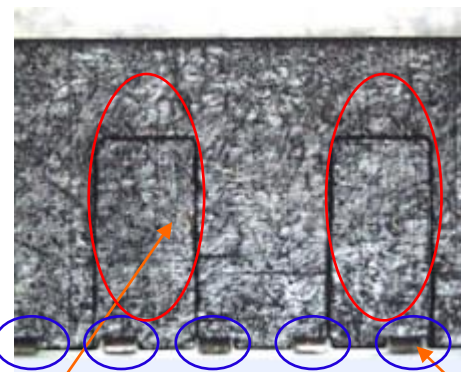


#### New:

- Au / GXT plating at contact area; Tin plating at Tail area (White color);
- For housing: having flat groove in the middle area for cap location (2 sides); and having nick feature in the bottom of housing for tail location (2 sides);



White color at solder tail area



Flat groove in the middle area

Nick feature in the bottom of housing